

Keloray



Product Instruction Manual

iSEA PRO

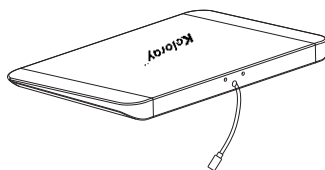
www.kelolight.com

Precautions for Safe Use

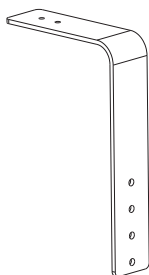
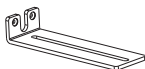
Thank you for using the Keloray-iSEA PRO aquarium light fixture. In order to ensure safe use and avoid injury and property damage to you or others, please read this instruction manual carefully before using the light fixture and be sure to observe the following safety precautions.

- When installing and using lights, please remove the excluded packaging bag.
- Disconnect the power supply before installation. Ensure that the power cable is not trampled, squeezed or blocked. Do not touch the plug with wet hands.
- Do not destroy the plug of the power cord. If the plug does not match your socket, please replace it with a suitable socket.
- Be sure to ask professionals to install, the installation needs to install the front light firmly, it is strictly prohibited to disassemble the machine.
- This light can only be installed indoors, do not be exposed to rain, wet, dripping environment.
- After turning on the light, please do not look directly at the light source or put your skin under the light to avoid burning your eyes or skin.
- If the power supply is damaged, non-professionals shall not replace it without authorization.
- The installation of lights should be away from heat sources, magnetic fields and other environments, and other objects are strictly prohibited to cover the lights.
- Do not use this product in areas other than aquarium.
- Do not clamp on glass less than 12mm thick when installing the light bracket.
- For any questions related to this product, please contact us directly. www.kelolight.com

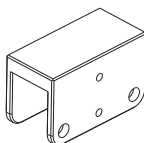
Packing List



Light body



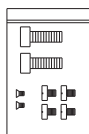
Bracket



U-shaped card slot



Certificate of conformity



Accessory bag

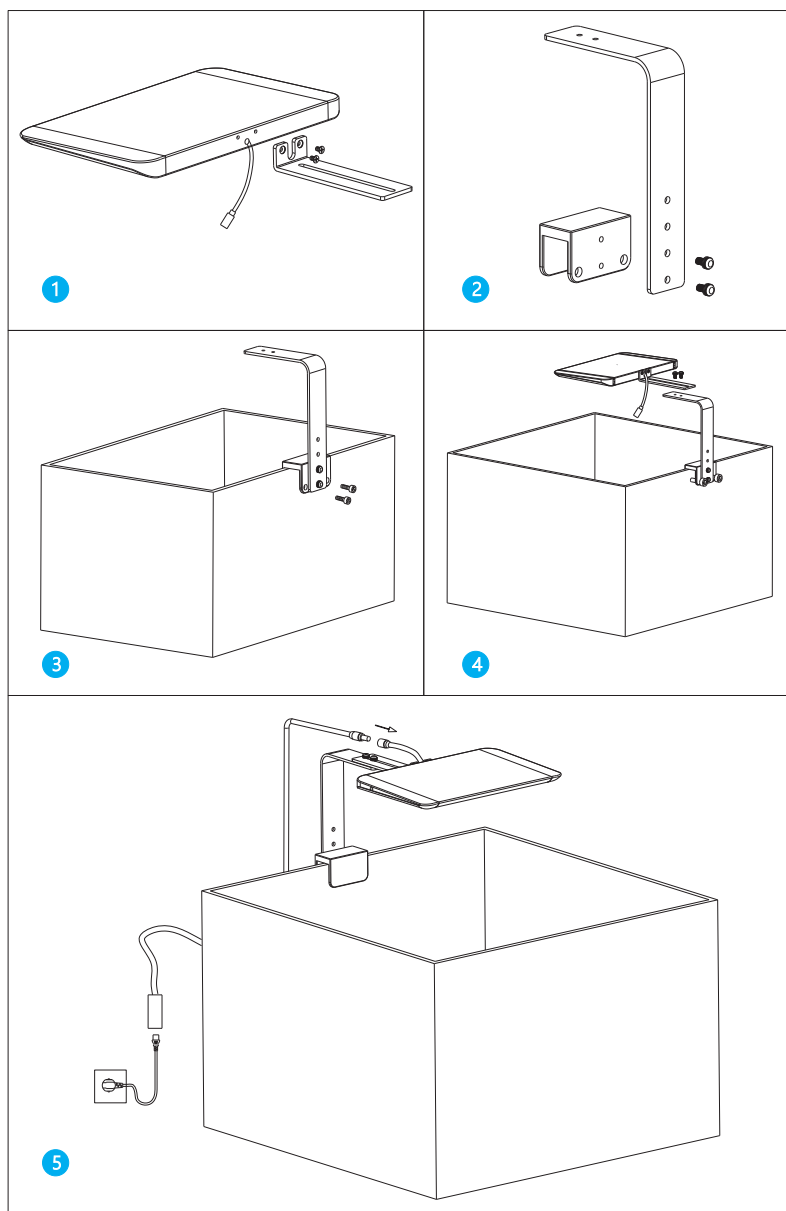


Instruction card

Note: This package includes the light body and installation accessories.

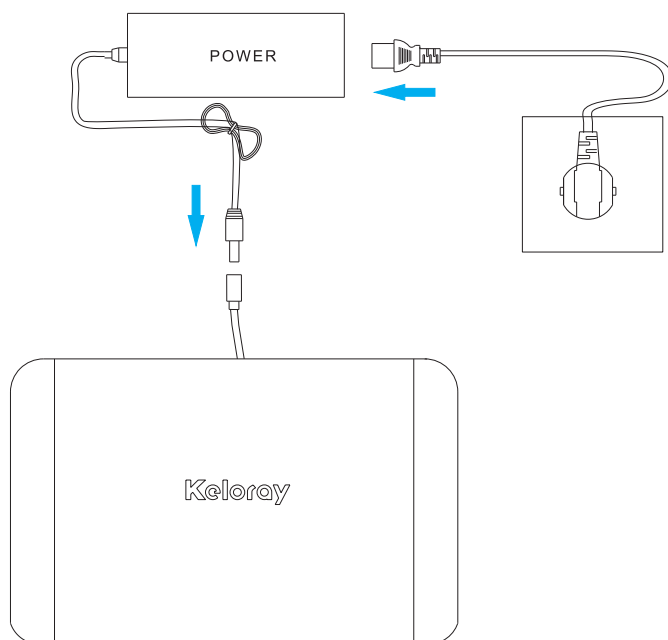
And the power adapter is a gift, users can also purchase separately.

Lighting Installation Method



Starting The Light

- 1、Connect the iSEA PRO with the drive power supply and insert the plug into the socket.



Product Specification

Item	iSEA PRO
Size and Weight	
Light Body Size	L300*W190*H21mm
Color Box Package Size	L320*W280*H55mm
Carton Size	L580*W335*H300mm
Net Weight of Light Body	1.07KG
Electrical Parameter	
Input Voltage	DC-24V
Rated Power	100W

APP User Guide

■ Connection

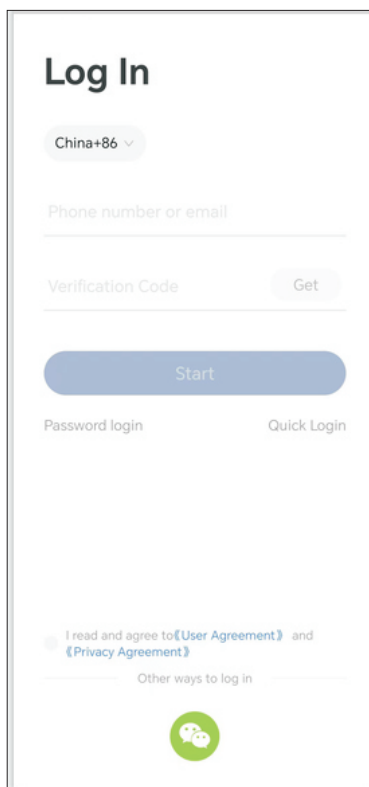
Keloray Pro Wifi control connection:

一. Download APP

1. IOS for iPhone, the operating system must be 13.0 or later.
2. IOS for iPhone, open the APP Store and search for "Keloray Pro" to download the software.
3. Android open Tencent App Treasure, search "Keloray Pro" to download the software.
4. Scan the QR code on the manual card to enter the official website to download.

二. APP Login

1. Mobile number verification code login .
2. Wechat login .
3. First, register an account with your mobile phone number. After successful registration, log in to the account and enter the APP homepage.



The screenshot shows the 'Log In' interface of the Keloray Pro app. At the top, there's a 'Log In' title. Below it is a dropdown menu for country codes, currently set to 'China+86'. There are two input fields: 'Phone number or email' and 'Verification Code'. A 'Get' button is next to the verification code field. A large blue 'Start' button is centered below the input fields. Underneath the 'Start' button are two links: 'Password login' and 'Quick Login'. At the bottom, there's a checkbox for 'I read and agree to《User Agreement》 and 《Privacy Agreement》' and a link for 'Other ways to log in'. A green circular icon with a white speech bubble is at the very bottom.

Add Device 1

1. Make sure the light power is connected correctly and start the light.
2. Turn on Wifi and Bluetooth of the mobile phone, then open the APP, enter the APP page (Figure 1).
3. When the device is connected for the first time, select “Add Wifi Device”, enter the search page, and add the device marked with Wifi.
4. Multiple-person connection mode: To add the device for the first time, select “Add Wifi Device”. Others select “Add Bluetooth Device”. Then a window pops up to enter the Wifi account and password. Select an available 2.4G-Wifi account, fill in the password, click Confirm, and wait for the connection to be successfully added. (See Figure 1, Figure 2, Figure 3, Figure 4)

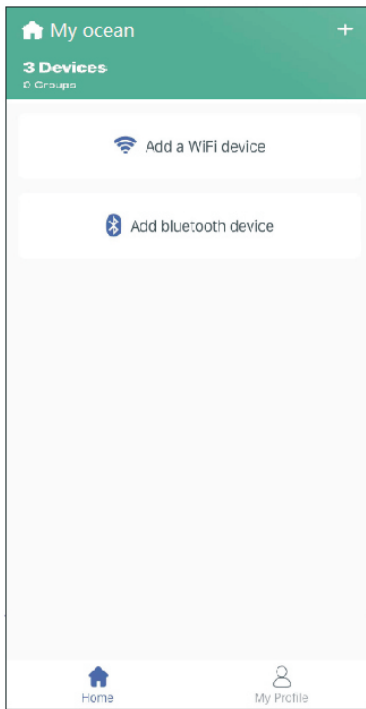


Figure 1

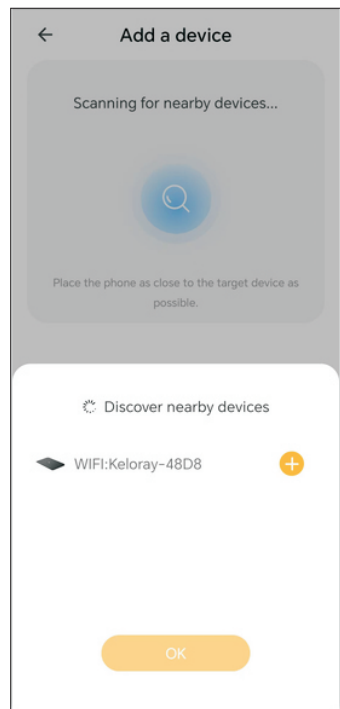


Figure 2

Add Device 2

5. Click on the added device to enter the operation page. There are two options at the bottom corner, Home and Preset. The Home page is the real-time brightness and manual preview of the color channel. The Preset has the photo mode and 5 timing modes.
6. Click any scene mode, and the device will run the current mode, which is displayed in blue.
7. After the device is connected to Wifi, it can be remotely controlled.

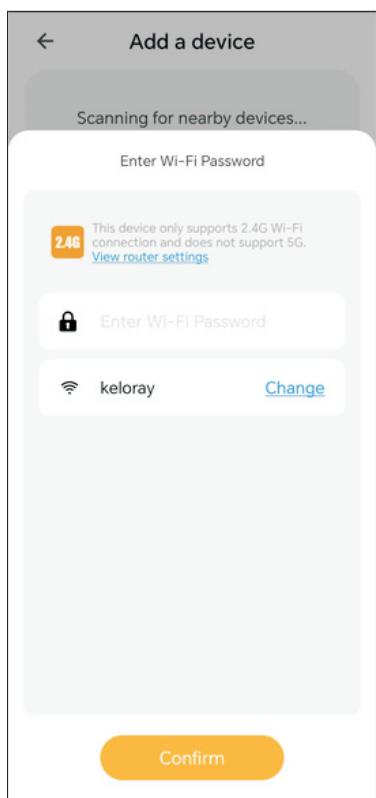


Figure 3

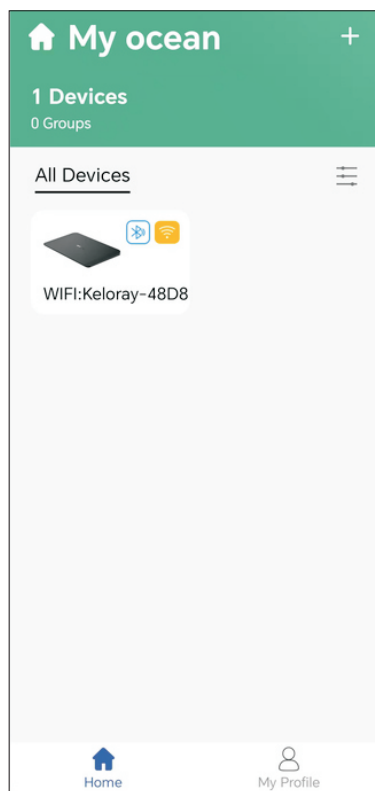


Figure 4

Share the Spectrum

Share the Spectrum

1. Long press a timing mode to enter the editing state as shown in Figure 5, click the share button in the upper right corner, a QR code on your phone and send it to people in need.
2. To add a spectrum, click the “+” button under the timing mode on the preset page, select “Scan spectrum QR code”, and then scan the QR code shared by others to successfully add the spectrum. The name can be modified by yourself (Figure 6)。

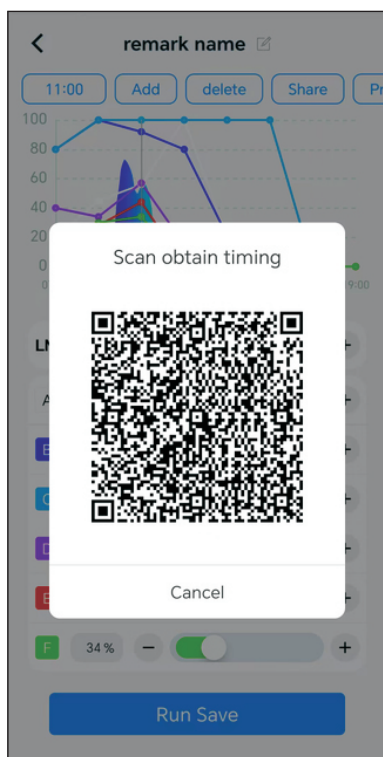


Figure 5

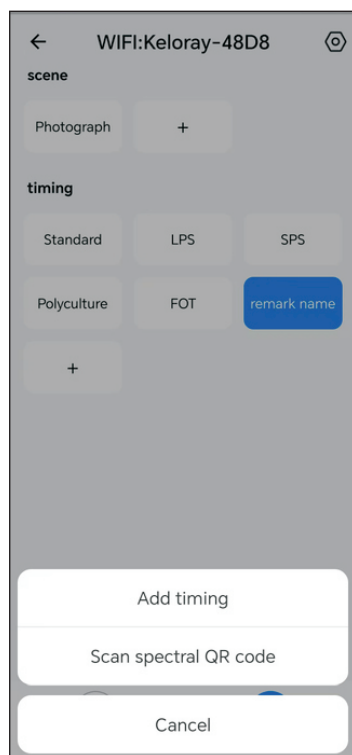


Figure 6

Add Group

1. Open the APP, display all devices and groups, click the "+" sign in the upper right corner, and select "Add Group" (Figure 7)。
2. Select more than one required device, click Next, edit the group name point to confirm, the grouping is completed。
3. Click on the group you just added on the page. There is a "Settings" at the bottom. Click Settings to operate the devices in this group。 (Figure 8)
4. Manually reset the device, unplug/plug the DC plug on the device 3 times, and see the indicator light on the right side of the device flash twice (1-2 seconds each time, no more than 5 seconds)。 After 3 times, the device light flashes twice, and the reset is successful. The device originally added on the APP is automatically erased。

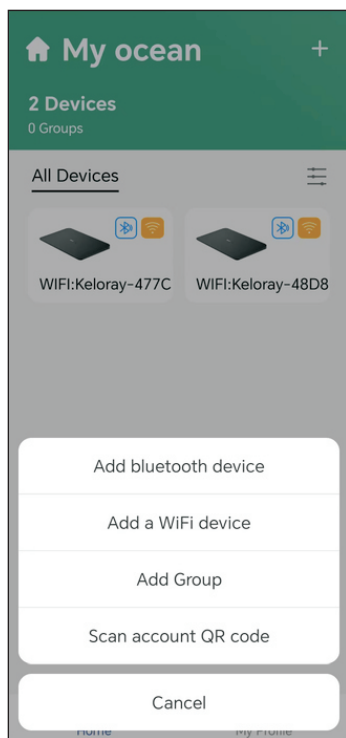


Figure 7

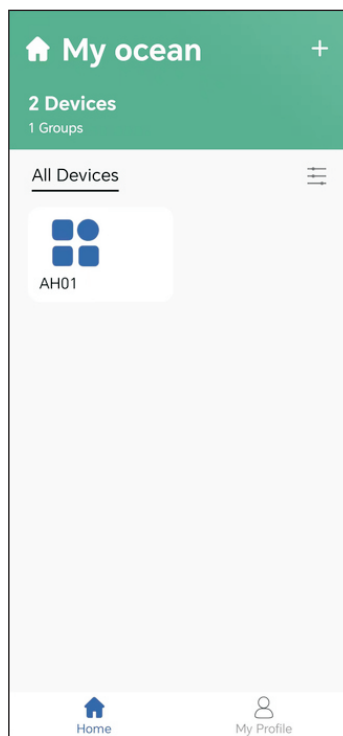
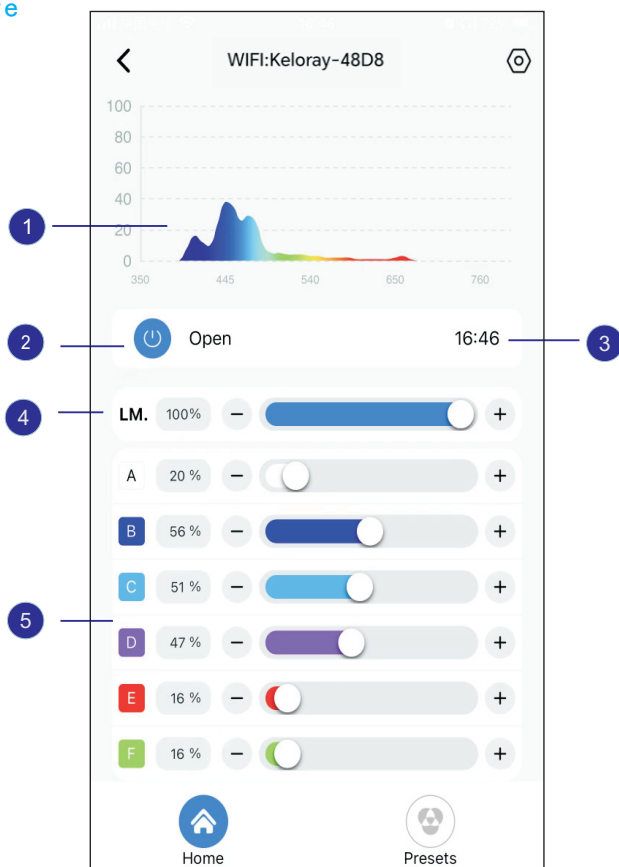


Figure 8

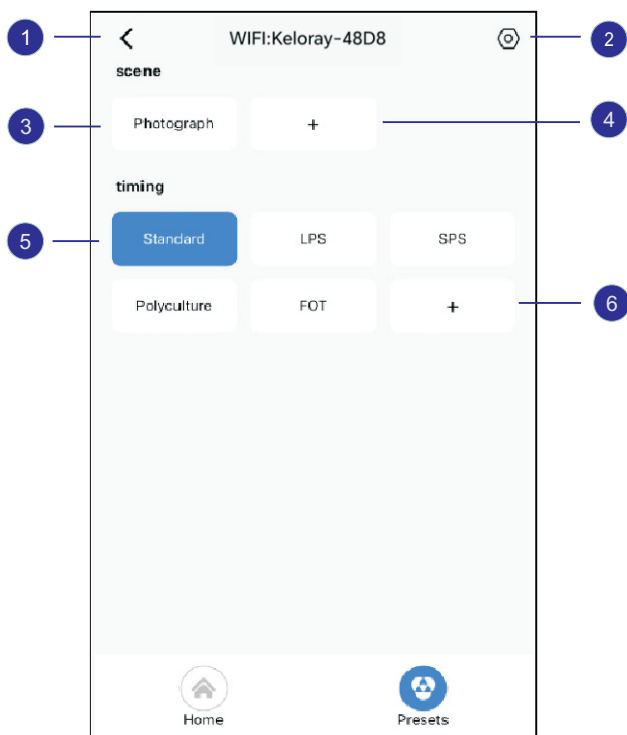
Control & Programming

Home page



- 1 Current spectra
- 2 Equipment master switch
- 3 Current system time
- 4 Total brightness of each channel
- 5 The current color channel is displayed in real time
A: White light channel, B: Royal blue channel, C: Sky blue channel,
D: Violet UV channel, E: Red channel, F: Green channel

Preset



1 Back

Return to previous page

2 Settings bar

Device name/Device information/Module update /
Use Help/Reset/Delete devices

3 Scene

Click Photo to enter the photo mode.
24 hours steady on, long press to edit
Save as custom brightness.

4 Add

Click “+” to create a new custom
photo scene

5 Timing mode

Standard/LPS/SPS/Mixed culture/Pure fish
Long press Edit to save as custom mode

6 Add

Click “+” to create the modification in the
current mode based on a new custom mode

Custom Programming

Manual Setting



- 1 Remarks name
Remarks Name Click to change the mode name
- 2 Point in time
Click the time to modify the time point
- 3 Add or subtract time points
- 4 The point in time that has been added
- 5 Quick preview mode
- 6 Light curve
Drag to select a point in time to add, delete, And edit color channel brightness
- 7 Run and save the current Settings

Care and Maintenance

In order to maintain good heat dissipation and performance of your lights, extend the lifetime of the lights. Please read the following tips carefully and develop the habit of regular care and maintenance.

- Pay attention to moisture, water and dust when using lights.
 - Check whether the power supply is damp and the power socket is plugged in regularly and monthly.
 - Clean the lampshade regularly and monthly with a dry rag to prevent dust and salt from covering it.
 - Clean the salt on the bracket regularly and monthly to prevent corrosion.
- ▲ When the working temperature of the light is too high, it will cause high temperature protection . The control system will reduce the light's brightness into the protection state, at this time the light relies on the radiator to actively dissipate heat and keep systems locked. Light fixtures are out of control. When the temperature drops to 40 degrees, the control system automatically unlock and restore the light to its previous operating state.

Warranty and Service

In order to ensure that you can enjoy the perfect after-sales service support, from the date of purchase, within a year, if there is a failure caused by non-human reasons, you can enjoy free product warranty service. Please read the warranty service description of this product carefully after purchase and keep the warranty card properly.

- In order to ensure your legitimate rights and interests, please note the following:
 1. With this card, you can enjoy the free warranty and spare parts preferential service during the warranty period.
 2. The warranty card shall not be effective until stamped by the dealer.
 3. The warranty card shall be properly kept by the user.
- Product failure caused by the following circumstances is not included in the free warranty:
 1. Can not produce a valid warranty card certificate and a valid purchase invoice or receipt.
 2. The S/N number on the warranty card is inconsistent with the S/N number on the light label.
 3. The label on the light is incomplete, no label or deliberately tore the label.
 4. Unauthorized repair, disassembly and artificial caused by water and product appearance and accessories wear and scratch.
 5. Damage caused by not using, maintaining and maintaining the equipment according to the requirements in the equipment manual.
 6. The use of the environment does not meet the product requirements and irresistible factors caused by failure.
 7. The product exceeds the warranty period stipulated by the company.

Keloray-iSEA PRO Warranty Card

Product Name:		Number S/N:	
Customer Name:		Address:	
Seller:			
Date of purchase:			

Product number S/N	Return date	Fault condition	Maintenance result	Reserve note



Product consultation, technical support, after-sales service

Please pay attention to Kelo Lighting WeChat public number

Shenzhen Kelo Lighting Technology Co., Ltd

Add: Building 7, Jiuyang Industrial Park, 57 Hexiu West Road,
Fuhai Street, Baoan District, Shenzhen

Tel: 0755-85255646
