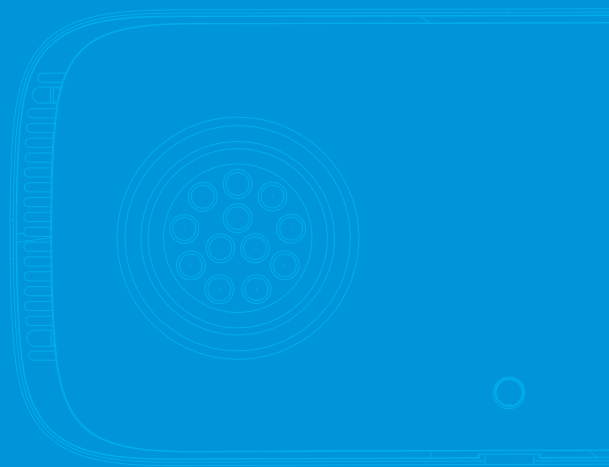


Keloray



User Manual

AR100

www.kelolight.com

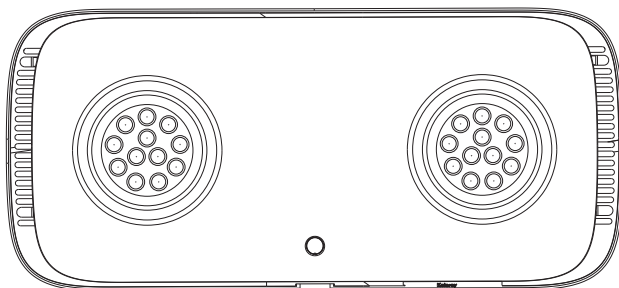
Get Started

Thank you for choosing Keloray AR100 as your LED lighting system.

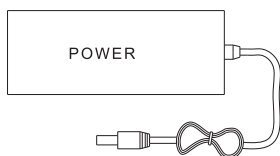
SAFETY INSTRUCTIONS

- Never look directly at the LEDs, as the light emits from LEDs can cause eye or skin damage. UV emits from this product can cause permanent damage to eyes or skin. Please minimize exposure of your eyes and skin directly to the LEDs.
- A drip loop must be used with all electrical aquarium devices. A drip loop is self-made by installing part of the power cord looping down below the power socket.
- Keloray is not responsible for problems, your personal safety or equipment damage caused by your mishandling of the product.
- Check the power cord, plug and socket are intact.
- Before installing, please read all state and local laws, make sure you use a compliant power adapter.
- Ask a qualified person for the wiring installation.
- Install the light fixture securely so no risk of contact with water.
- Do not put anything on the product.
- Avoid objects entering the unit. Keep the slot and ventilation openings clean, they should not be blocked or covered.
- Do not allow water to splash, or place unit in the water.
- If the light fixture or power supply becomes damaged, please have it repaired or replaced by a professional person.

INSIDE THE BOX



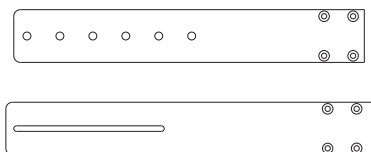
AR100 X 1



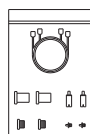
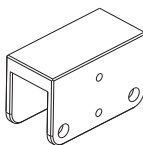
Power Adapter X 1



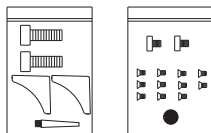
Power Cord X 1



Bracket X 1



Pendant Cord X 1



Accessories Bags X 2

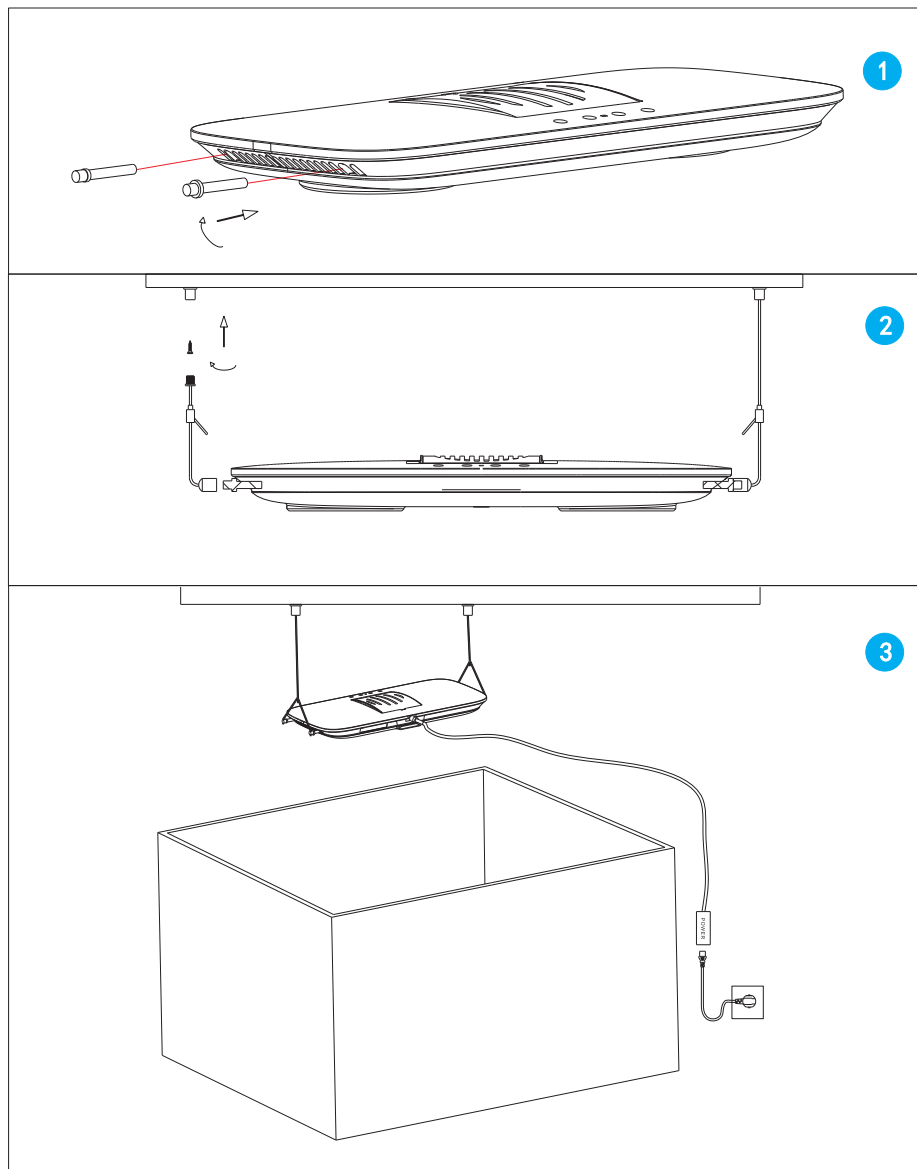


User Manual X 1

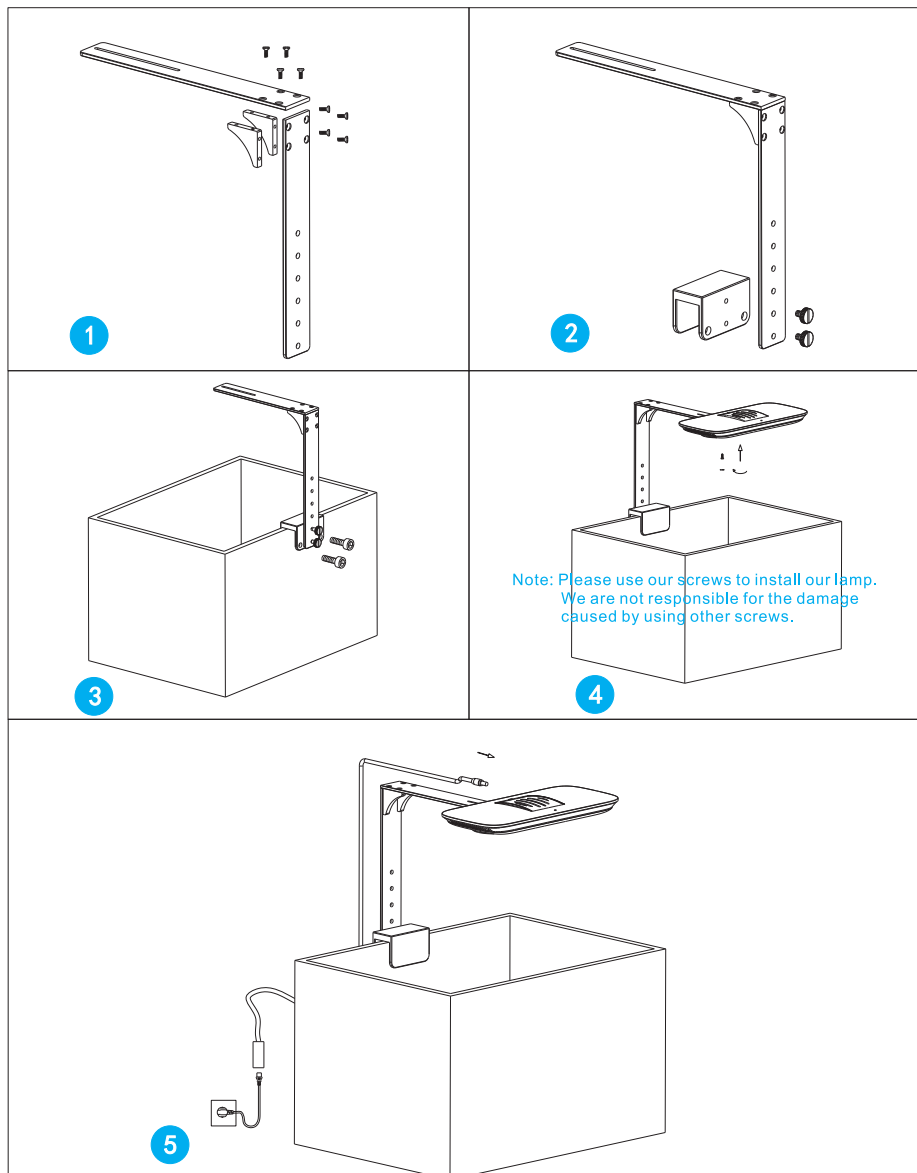
Note: Please use our screws to install our lamp.
We are not responsible for the damage
caused by using other screws.

Installation

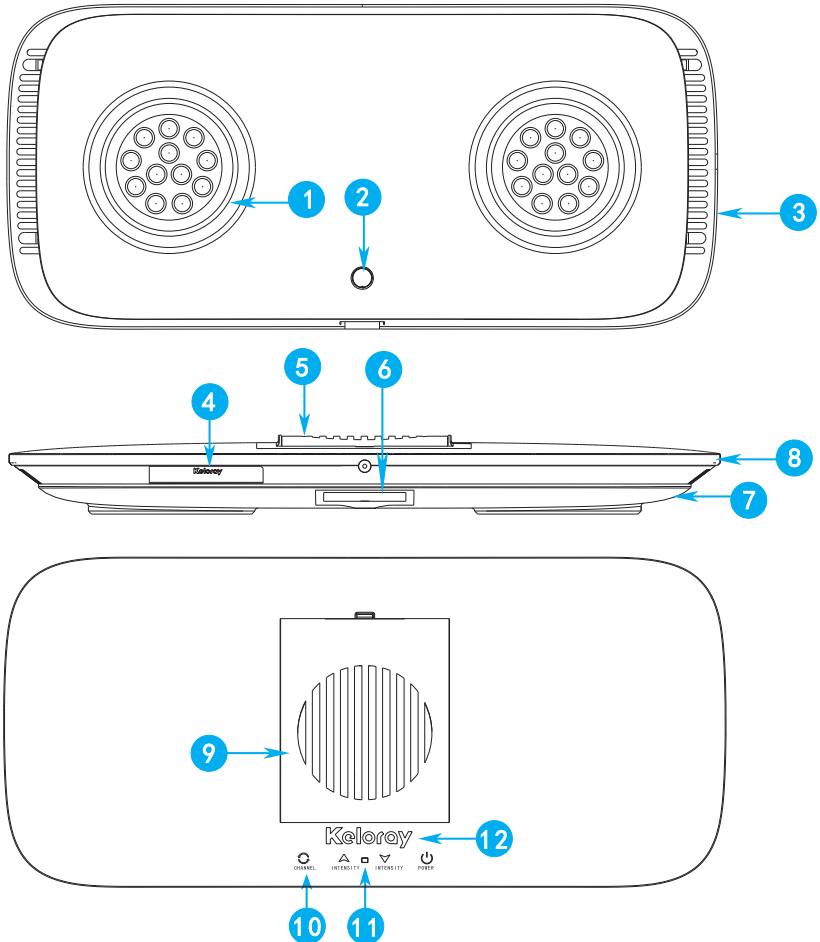
1. Mounting the pendant



2. Mounting the bracket



Description



- | | | |
|------------------------|------------------|----------------------------|
| 1 LED Array | 5 Fan(Air Inlet) | 9 Dust-proof Net |
| 2 Mounting Fixed Screw | 6 Mounting Guide | 10 Touch Sensitive Buttons |
| 3 Vent | 7 Lamp Housing | 11 WiFi Indicator Light |
| 4 Label | 8 Hanging Hole | 12 Logo |

WiFi Controller APP User Manual

Keloray WiFi controller has two different connection modes.

1. Connect Light Directly

Press (▼) and (↻) simultaneously until you hear “beeps” from the light, release fingers. The unit is now operating in “Connect Light Directly” mode.

- a. Factory default connect mode.
- b. Wireless router is not necessary.
- c. Can't use WiFi network or cellular data.
- d. Can't make group lights programming.

2. Connect Wireless Router

Press (▲) and (↻) simultaneously until you hear "beeps" from the light, release fingers. The unit is now operating in "Connect Wireless Router" mode.

- a. Phone can connect to internet and control light at the same time.
- b. Both the mobile phone and aquarium light need to be connected to the wireless router.
- c. One mobile phone device can program a group of lights at the same time in this mode.

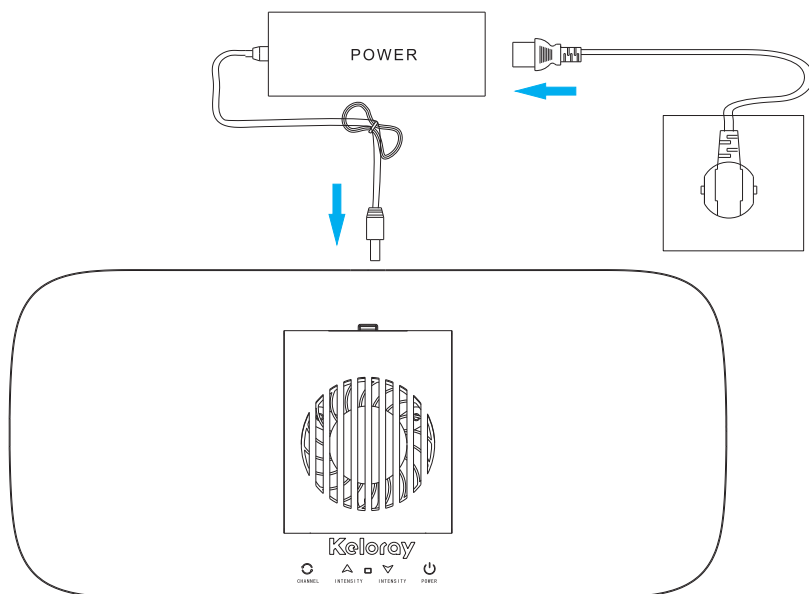


WiFi Signal Indicator Light

Blue Indicator Light	Means
Indicator light flashes three times then turns off	WiFi working under network mode, error occurred while connecting to the home router, it may be a password error or router is turned off.
Indicator light off	No transmitting data.
Indicator light stays on	Normal operation.

Start Lamp

Connect the AR100 to the power adapter and plug it into a wall outlet.




Product Specifications

Dimensions and Weight	
Lamp Size	L350*W160*H30 mm
Inner Color Box Size	L480*W280*H65 mm
Outer Box Size	L500*W300*H80 mm
Net Wight	2.3 kg
Gross Wight	2.6 kg
Power Supply	
Input Voltage	100-240V AC
Output Voltage	24V DC
Power Consumption	100W

Touch-sensitive Buttons Operate Instructions


- ▲ Please keep the light buttons clean and dry, also make sure your fingers are dry, otherwise touching keys may fail.

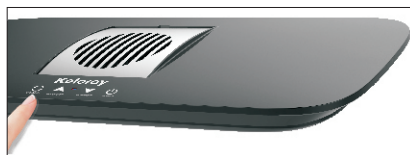
On/Off Button

Touch the () button to turn on the AR150. Touch the button once more will turn the light off. When you turn on the AR150, brightness will increase step by step in order to protect eyes.




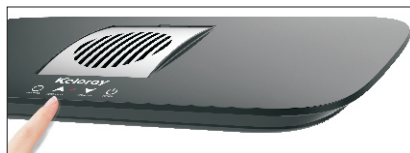
Color Switch Button

Touch the cycle () button can switch the color, then adjust the color intensity by up and down buttons. Programs can be customized by Kelo APP.




Cycle Color Up Button

The () button has five cycle brightness steps, brightness from 1-2-3-4-5.



Cycle Color Down Button

The () button has five cycle brightness steps, brightness from 4-3-2-1-0.



Touch the "intensity up" and "intensity down" buttons simultaneously for 3 seconds until you hear a "beep", release fingers, touch buttons are unlocked now. The touch buttons will automatically lock when they are not operated for five minutes to prevent accidental operation of the unit.

Connection

Download APP

- iOS Operating System 9.3.1 or above is recommended.
- iOS device opens "Apple store" to search and download the "Kelo" APP.
- Android device opens "Google Play" to search and download the "Kelo" APP.

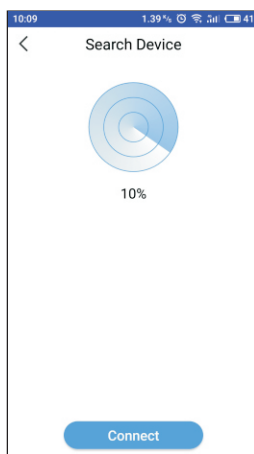


Connect Light Directly

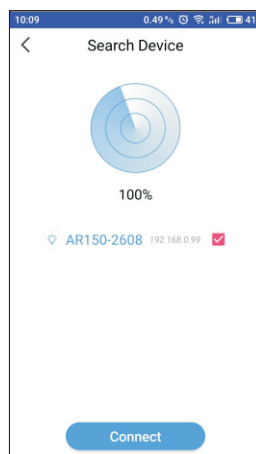
1. Make sure the light is connected to the wall outlet through power adapter.
2. Access your phone the "Setting" to connect the light's WiFi signal, such as the WiFi ID: AR100-XXXX, default password: 12345678. (picture 1)
3. Open the Kelo APP, press "Search Icon" to search the light. (picture 2)
4. Select the WiFi signal "AR100-XXXX" you connected in "Setting". (picture 3)
5. When connected successfully, you can control the light by Kelo APP.



Picture 1



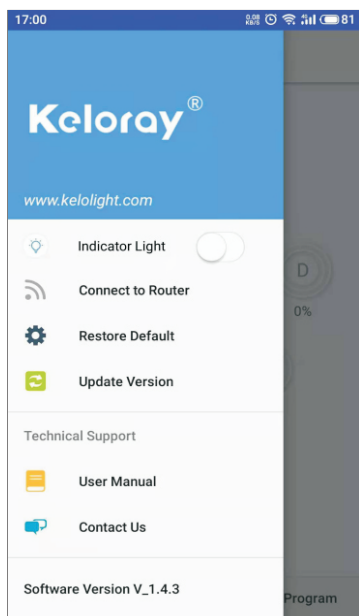
Picture 2



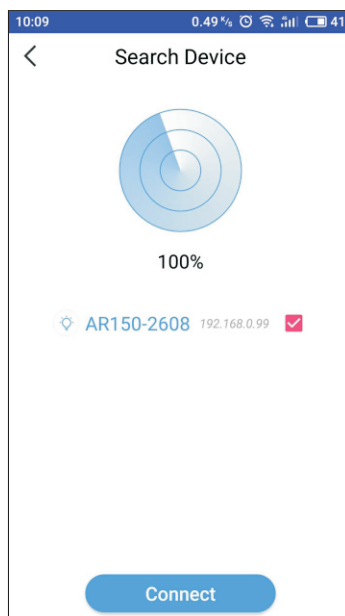
Picture 3

Connect Wireless Router

1. When you light under the “Connect Light Directly” mode.
2. Tap the manu list icon on the top left corner, then tap the “Connect to Router”, fill in your Router WiFi name and password.(picture 4)
3. When you connect successfully, the light will restart, you need to turn off the APP, then turn it on again.
4. Tap the “Search Icon” to search the light’s WiFi ID, then connect them.
5. Now you can control your light, you also can control several lights under this control mode at the same time.(picture 5)



Picture 4

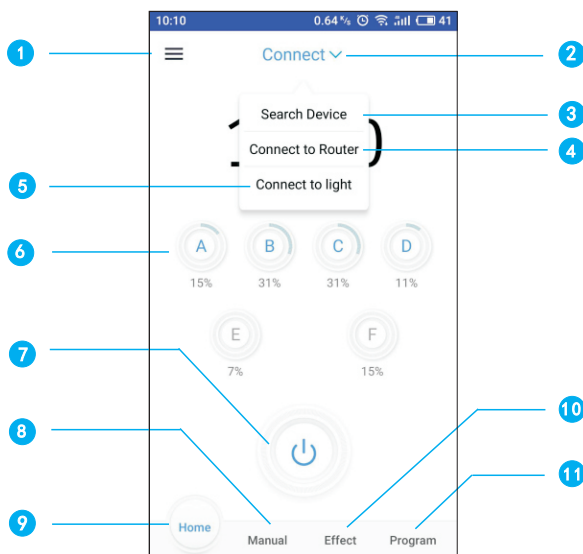


Picture 5

Remember: If you want to change back to “Connect Light Directly” mode, please press (▼) and (🔍) simultaneously, then repeat above operations.

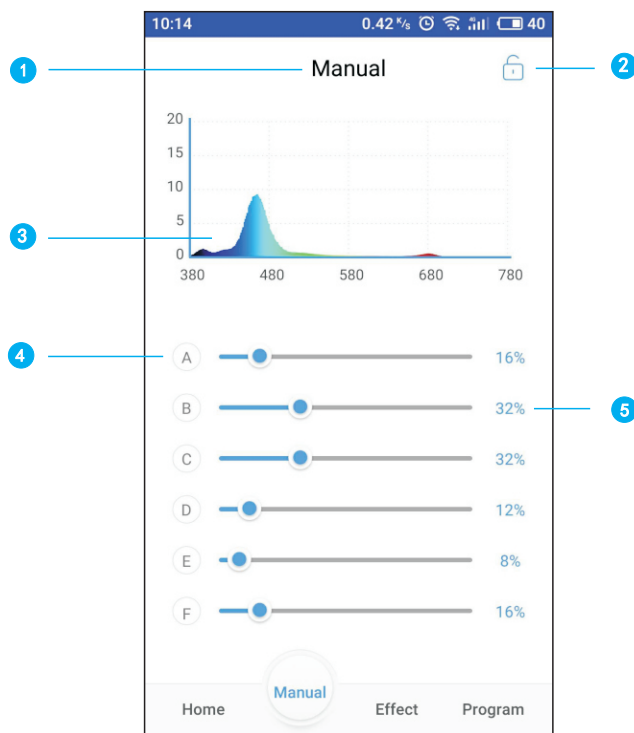
Controlling & Programming

Homepage



- 1 Menu**
Information List: Keloray Logo, Keloray Website, Indicator Light, Connect to Router, Update Version, User Manual, Contact Us, Ask for Help, Hardware Version, Software Version.
- 2 Connect List**
Tap to list connection methods.
- 3 Search Device**
Tap to search connected lights.
- 4 Connect to Router**
Tap to "Connect WiFi Router".
- 5 Connect to light**
Tap to "Connect light directly".
- 6 Color Channels**
Current brightness of each color channel.
- 7 ON/OFF Button**
Tap to turn on/off light.
- 8 Manual Page Navigation**
Tap to Manual program page.
- 9 Homepage Navigation**
Tap to homepage.
- 10 Effect Page Navigation**
Tap to effect show page.
- 11 Program Page Navigation**
Tap to program page.

Manual Page



1 Manual Page

Manual program can change light intensity only, you cannot set time point to make intensity change automatically.

2 Lock/Unlock Button

Switch the lock on manual mode, the light is now locked to manual only.

Note: Please don't lock the manual mode if no need.

3 Spectrogram

Current light spectrum is displayed.

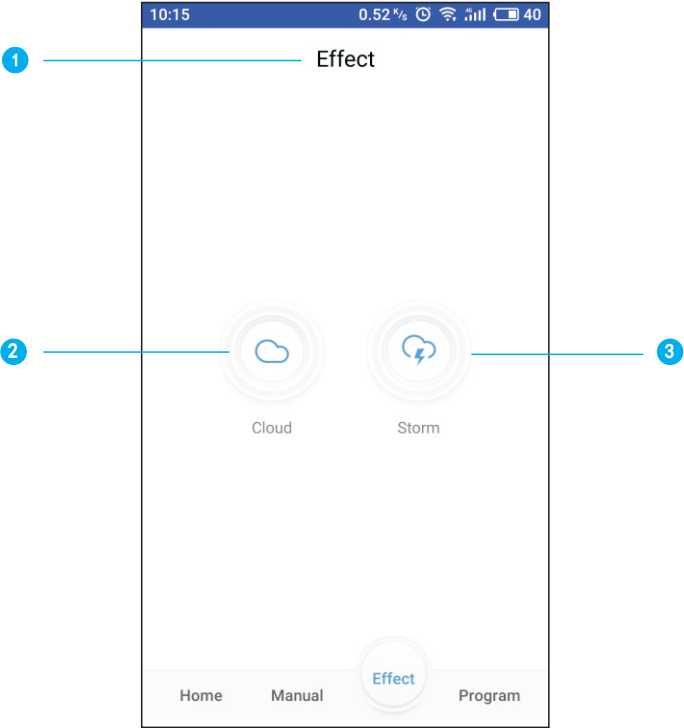
4 Color Bar

Slide the bar to change intensity of each color (A : cool white, B: royal blue, C: sky blue, D: violet & UV, E: deep red, F: green).

5 Intensity Percentage

Slide the bar, percentage will change between 0%-100%.

Effect Page



1 Effect Options

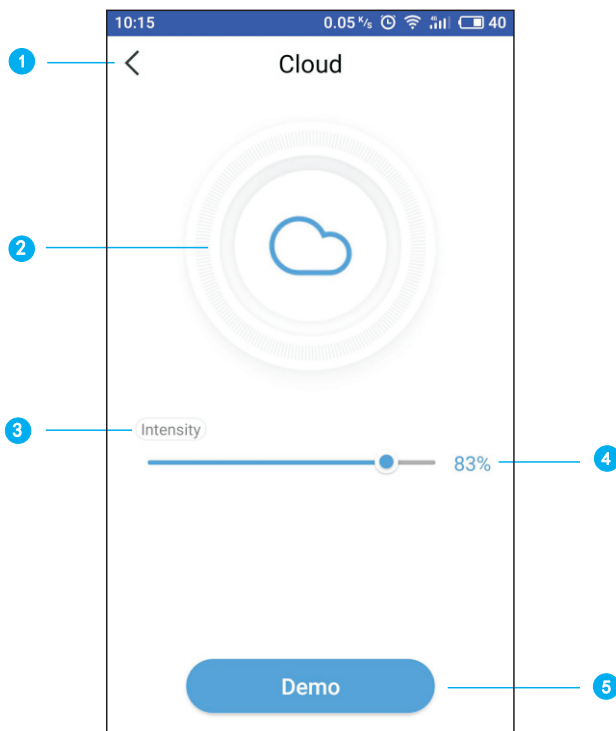
An effect quick show page for functions: Cloud and Storm. Just for demonstration, your program can't be saved on this page.

2 Cloud Button

Tap to set cloud.

3 Storm Button

Tap to set storm.



1 Back Button

Go back to previous page.

2 Cloud Icon

Simulated sunlight in cloudy weather.

3 Set Intensity

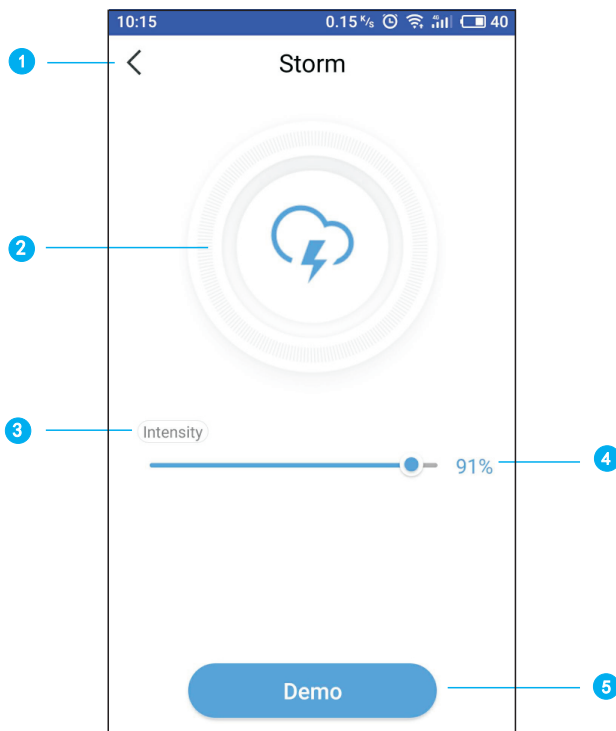
Slide the bar to slightly adjust the intensity of cloud.

4 Intensity Percentage

Slide the bar, percentage will change between 0%-100%.

5 Demo Button

Tap to preview cloud effect. Tap again to stop.



1 Back Button

Go back to previous page.

2 Storm Icon

Simulated sunlight in stormy weather.

3 Set Intensity

Slide the bar to slightly adjust the intensity of storm.

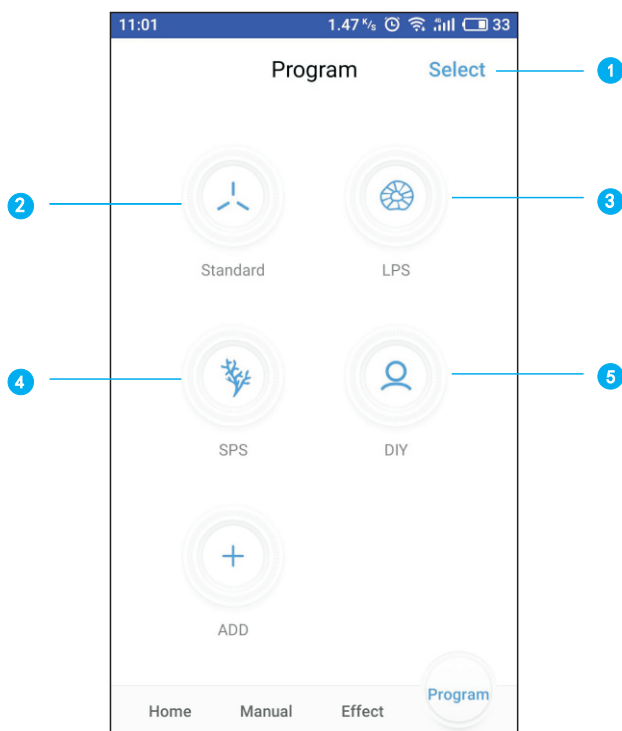
4 Intensity Percentage

Slide the bar, percentage will change between 0%-100%.

5 Demo Button

Tap to preview storm effect. Tap again to stop.

Program Page



1 Select Button

Delete customized programs.

2 Standard Program

Factory program, can't be edited, no need to save. This is for people who don't wish to program the light or have lost user settings.

3 LPS

Program for LPS Reef tank.

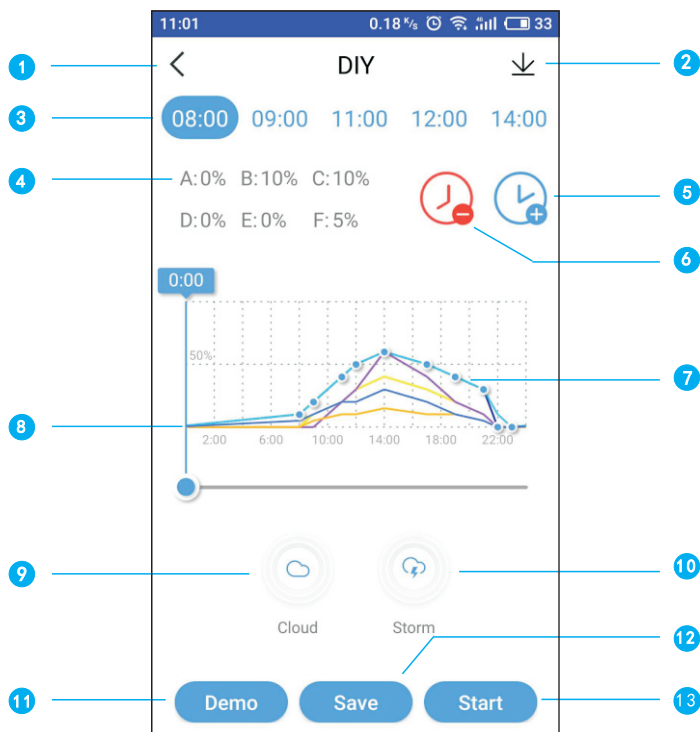
4 SPS

Program for SPS Reef tank.

5 DIY

Do it yourself program. Added when you press "Add" button.

DIY Program



1 Back Button

Go back to previous page.

3 Time Point

Tap to select point, tap again to edit point page.

5 Add

Tap to add a new time.

7 Intensity Curve

Auto generation of intensity curve of each color channel.

9 Cloud

Tap to add cloud effect.

2 Download

Download program from the light.

4 Intensity Grade

Intensity grade of each color channel.

6 Delete

Tap to delete the selected time.

8 Time Point Slide Bar

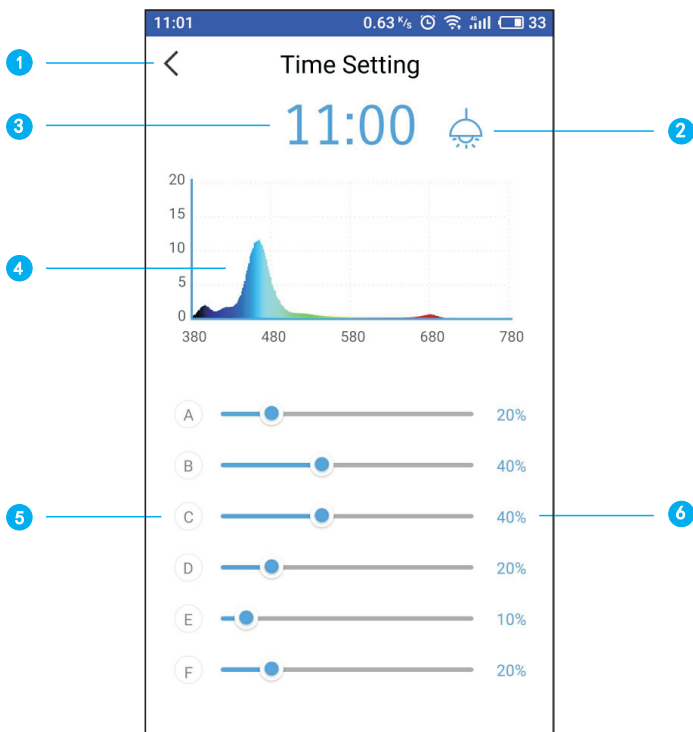
Slide to select time.

10 Storm

Tap to add storm effect.

- 11 Demo**
Tap to preview the program on the light. It takes 30 seconds to run the program cycle once. It does not show effect points.
- 12 Save**
Tap to save your DIY program.
- 13 Start**
Tap to start running current DIY program.

Time Setting



- 1 Back Button**
Go back to previous page.
- 2 Visual Switch**
Turn on the switch, user can see brightness changing on the light when sliding the color bar.
- 3 Time**
Tap to set time.
- 4 Spectrogram**
Current spectrum of the light.
- 5 Color Bar**
Slide the bar to change intensity of each color.
- 6 Intensity Percentage**
Slide the bar, percentage will change between 0%-100%.

Troubleshooting

- **Lost lamp(s) after setting up WiFi.**

Pull down the list to refresh.

Make sure the WiFi indicator light is solid blue.

Make sure the phone is connected to the correct light WiFi SSID/Wireless router. If it is still not working, repeat WiFi set up.

- **Can't find light's WiFi name on your mobile device signal list.**

Make sure light didn't connect to household WiFi router.

Make sure mobile phone is not too far away from light.

- **App crashes during connection.**

Make sure you connect to the right network.

Pull down the list to refresh.

- **One or more lamp(s) is missing.**

Make sure you connect to the correct light WiFi SSID/Wireless router.

Pull down the list to refresh.

- **How to sync multiple lamps?**

Choose "connect WiFi router", search all lights near your household/store WiFi router. Select group lights you want to control at the same time.

- **Electric power shut down.**

Make sure light is connected to the AC outlet.

Make sure you connect to the correct light WiFi SSID/Wireless router, then pull down the list to refresh.

- **The App and the lamp(s) is not synchronizing under Program Mode.**

Make sure your phone is at real time setting.

Make sure mobile phone connect to the correct light WiFi SSID/Wireless router, then pull down the list to refresh. Enter Program Mode and make sure your customized program is "saved" and "started".

Maintenance

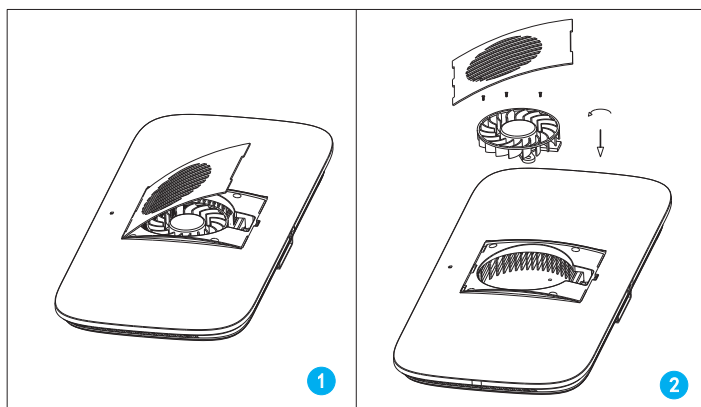
In order to make your lamps work in a optimal temperature and prolong the service life, please read the following carefully and form the habit of regular maintenance.

- Please pay attention to moisture-proof, waterproof and dust-proof when using lamps.
- Please regularly clean up the dust and salt stain of fan inlet and outlet.
- Please regularly clean the salt stain on the bracket to prevent corrosion.
- Please regularly check whether the power is damp, or plug is in the power outlet.
- Please use dry cloth to clean the transparent glass on the surface of LED light source, avoiding being covered by dust and salt stain.

▲ When the fan inlet and outlet of the lamp are covered with sundries and dust, the lamp will start its prevent high temperature system. The control system will reduce the brightness of lamp and enter the protection state. At this time, the lamp actively dissipate heat by the radiator, the control system is locked, and the lamp can not be controlled. When the temperature is reduced to 40 degrees, the control system automatically unlocks, and the lamp recover the previous operation state.

Fan Replacement

If you need to replace the fan, take off the dust-proof net according to the following pictures, remove the three screws with a screwdriver, and pull out the terminal line. Then you can fix the new fan on the lamp.



Warranty

● Dear User

In order to let you familiarly use our product and enjoy excellent after-sale service. Please read carefully the product instruction and installation diagram, and keep properly this card.

● Product Warranty

This warranty card is the only proof for warranty, which should be stamped with distributor's seal. Customer enjoys 12 months warranty since the purchase of product(subject to the purchase date on sales receipt).

● Limited Warranty

- a. Cannot provide the certificate or valid sales document, or it is altered, or does not match the product.
- b. Damaged by misuse, abnormal use, taking apart by yourself, altering the appearance and other human factors.
- c. Damaged as a result of mistaken assembling, using and maintaining due to failure to follow instruction and diagram.
- d. Normal wear and tear of consumable parts.
- e. Break downed or damaged by natural disaster or other force majeure, such as earthquake, fire, typhoon, thunder and so on.

We are disclaimed responsibility for relevant equipment, tank creatures or furniture from other company. The service covered by the warranty is free. We will charge the service when the warranty card passes its last effective date or the service is not covered by warranty. The warranty card and sales receipt should be provide for repairing. Please keep it properly! Thanks!

Product Warranty Card

Product Model Number	
Item Serial Number	
Customer	
Address	
Dealer	
Purchase Date	

