

Keloray

AO Series  
Keloray LED Lighting  
Quick Start Manual



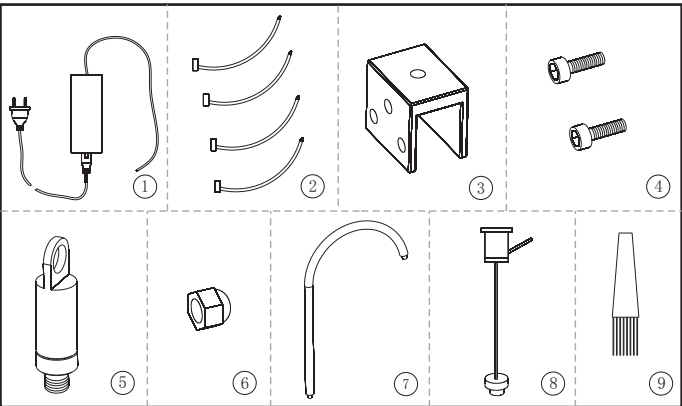
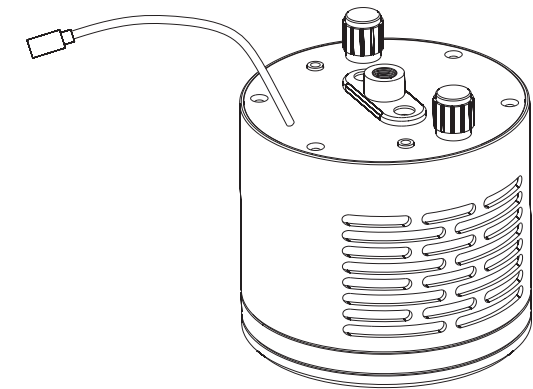
www.kelolight.com



AO SERIES LED PENDANT AQUARIUM LIGHT

The Keloray AO series LED light utilises a 100W dense matrix LED with a beam angle of 90 degrees. The light has 2 adjustable channels that allow for adjustment of the spectrum from white to Actinic and all shades in between. The AO series provides a beautiful shimmer effect, which will boost coral growth and colour. An additional WIFI controller is available allowing 6 settings of light intensity/spectrum and time for each of the 2 channels.

PACKAGE CONTENTS



- ① Power adapter  
② DC wire tie  
③ Gooseneck base  
④ Gooseneck base fixing screws  
⑤ LED pendant mounting adapter  
⑥ Gooseneck light fixing nut  
⑦ Adjustable gooseneck  
⑧ Height adjustable pendant cable  
⑨ Brush

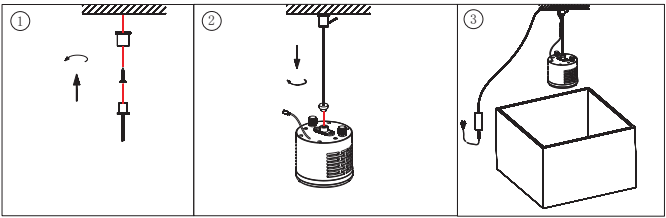
Mounting method 1  
choose: ① ② ⑧

Mounting method 2  
choose: ① ② ③ ④ ⑦

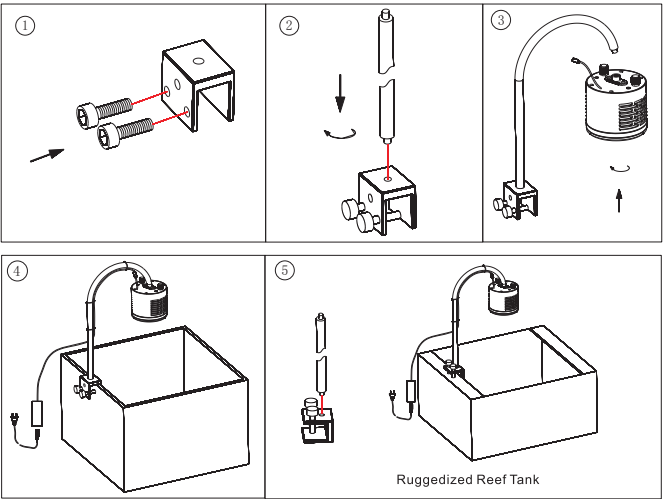
Mounting method3  
choose: ① ② ③ ④ ⑤  
⑥ ⑦

INSTALLATION DIAGRAM

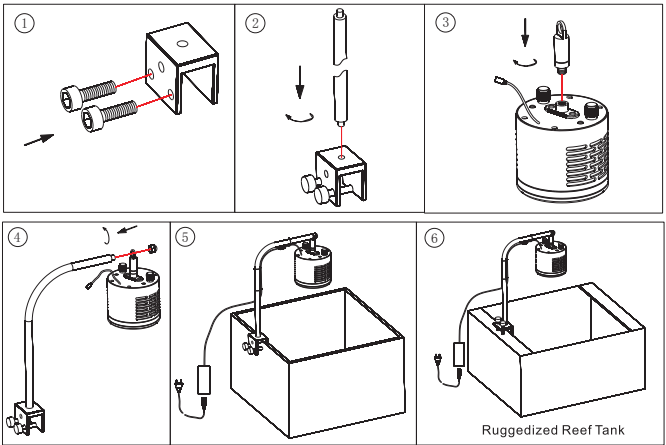
Mounting The Pendant(Method 1)



Mounting The Gooseneck(Method 2)



Mounting The Gooseneck(Method 3)



Warranty Card

Dear User:  
In order to familiarise yourself with the product, please carefully read these instructions and diagrams before attempting installation. Please retain this manual for future use.

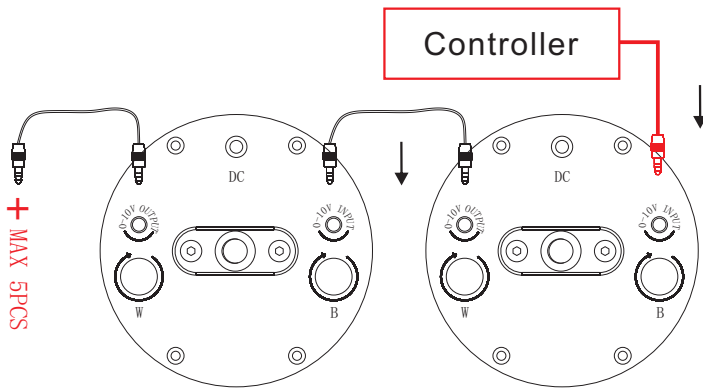
Product Warranty:  
Keloray offer a 12 month warranty from date of purchase for this product. Please make a note of your purchase details on this card and retain your receipt for proof of purchase in the unlikely event of the product developing a fault.

- Warranty exclusions:
- No proof of purchase or altered proof of purchase.
  - Damage to product from misuse, abnormal use.
  - Product has been disassembled or modified
  - Damage as a result of incorrect installation or failure to regularly maintain the product.
  - Normal wear and tear.
  - Damage by natural disaster or other force majeure.

Warranty is limited to product repair or replacement and does not include replacement of other equipment/aquarium livestock/ furtinture.

|                      |       |
|----------------------|-------|
| Product Model number | _____ |
| Item Serial Number   | _____ |
| Customer             | _____ |
| Address              | _____ |
| Dealer               | _____ |
| Company Seal         | _____ |
| Purchase Date        | _____ |

PRODUCT SPECIFICATION



| Model   | AO100S    |
|---|-----------|
| Total Power Of Light  | 100W      |
| Input Voltage   | 100-240V  |
| Out Put Voltage   | 30V       |
| Item Size   | Φ108*94mm |
| Recommended best size:<br>60*60*60cmH/26.3*26.3*26.3H(INCH) |           |

SAFETY INSTRUCTIONS

- ① DO NOT use a power supply that is outside the specifications. This is a fire hazard and may lead to unit failure.
- ② DO NOT use outdoors. This unit is intended for indoor use only.
- ③ DO NOT expose unit to an extremely humid environment or submerge unit in water. This may lead to unit failure.
- ④ DO NOT place working illuminator in close contact with any objects. This may cause objects to heat up and the unit to overheat.
- ⑤ KEEP lens away from sharp objects. Sharp objects may break the lens and lead to unit failure.
- ⑥ DO NOT cover or place objects on the power supply. Power supply should not be contained in an airtight space.

MAINTENANCE

- 1.Keep air venting holes and fan clear of dust. To clean the fan, unplug the unit and insert the tip of a CO2 dust blower (or similar dust blower) in one of the venting holes on the unit's outer shell. Hold and spray.
- 2.Keep the lens clean. If the lens becomes contaminated with water, dust, or other particles, unplug the unit and clean the lens with isopropyl alcohol. Wet a cotton swab or a napkin in isopropyl alcohol, gently wipe the surface of the lens, and let it dry.

TROUBLE SHOOTING GUIDE

| Problem               | Cause / Solution  |
|-----------------------|---|
| Light doesn't turn ON | Make sure the unit is connected to the power supply and the power supply is plugged into an outlet with the correct specifications.     |
|                       | Make sure electrical power is available to the AC outlet being used.  |
|                       | Make sure the power supply has the right specifications.  |
|                       | Make sure the device is operating within the specified operating temperature range. If unit overheats, it will automatically shut down. |
| Unit is flickering    | Make sure the power supply has the right specifications.  |
|                       | Make sure the unit has not overheated by operating at a room temperature exceeding 35°C.  |
|                       | Make sure the fan is operating properly   |

